

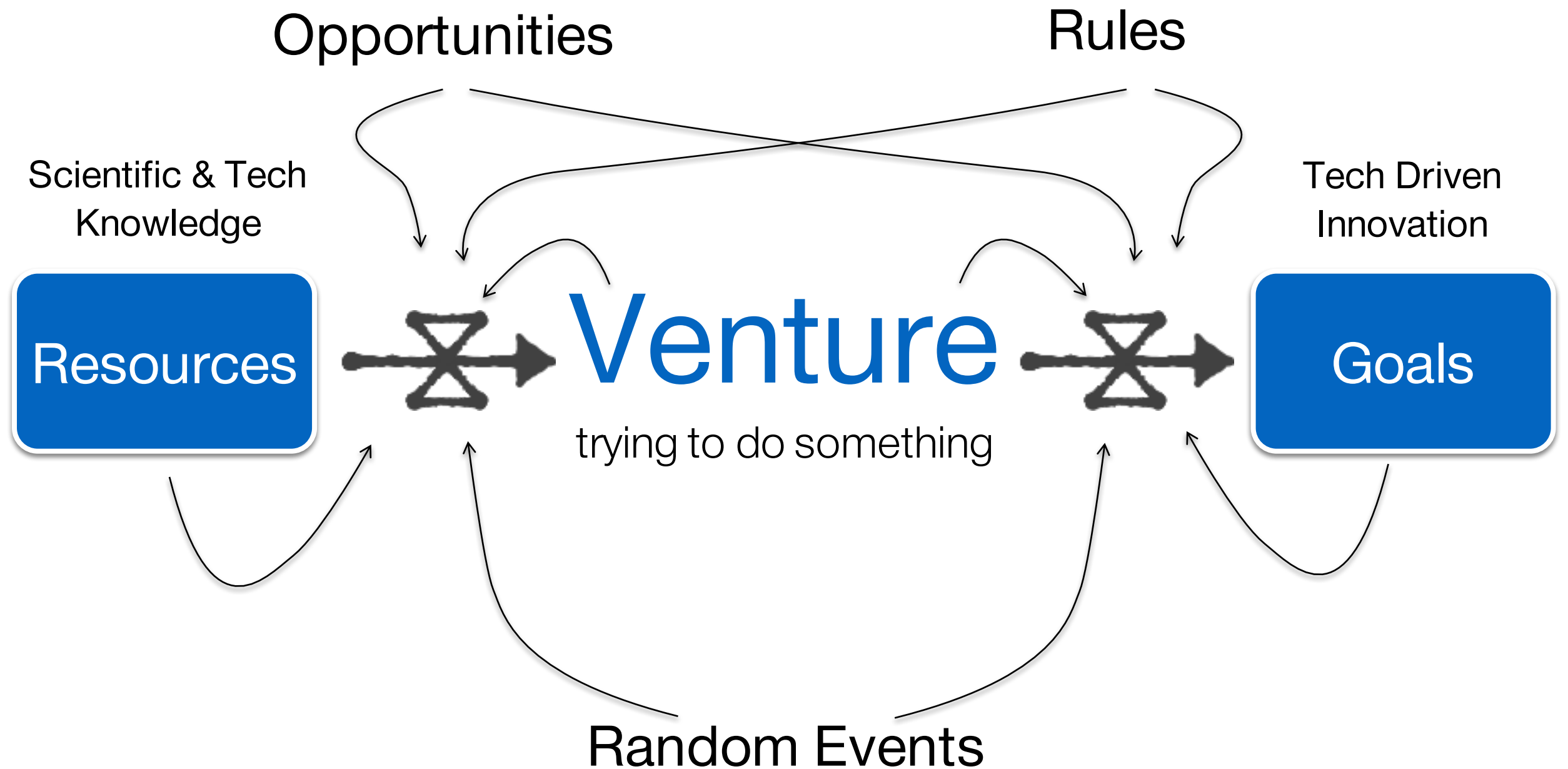


MITEF  
GREECE  
STARTUP  
COMPETITION

Πρωθώντας την  
Τεχνολογική Επιχειρηματικότητα  
στην Ελλάδα

MIT  
ENTERPRISE  
FORUM  
GREECE







# IDEAS

# Problems

(somebody pays for the solution)





Make solar energy economical



Provide energy from fusion



Develop carbon sequestration methods



Manage the nitrogen cycle



Provide access to clean water



Restore and improve urban infrastructure



Advance health informatics



Engineer better medicines



Reverse-engineer the brain



Prevent nuclear terror



Secure cyberspace



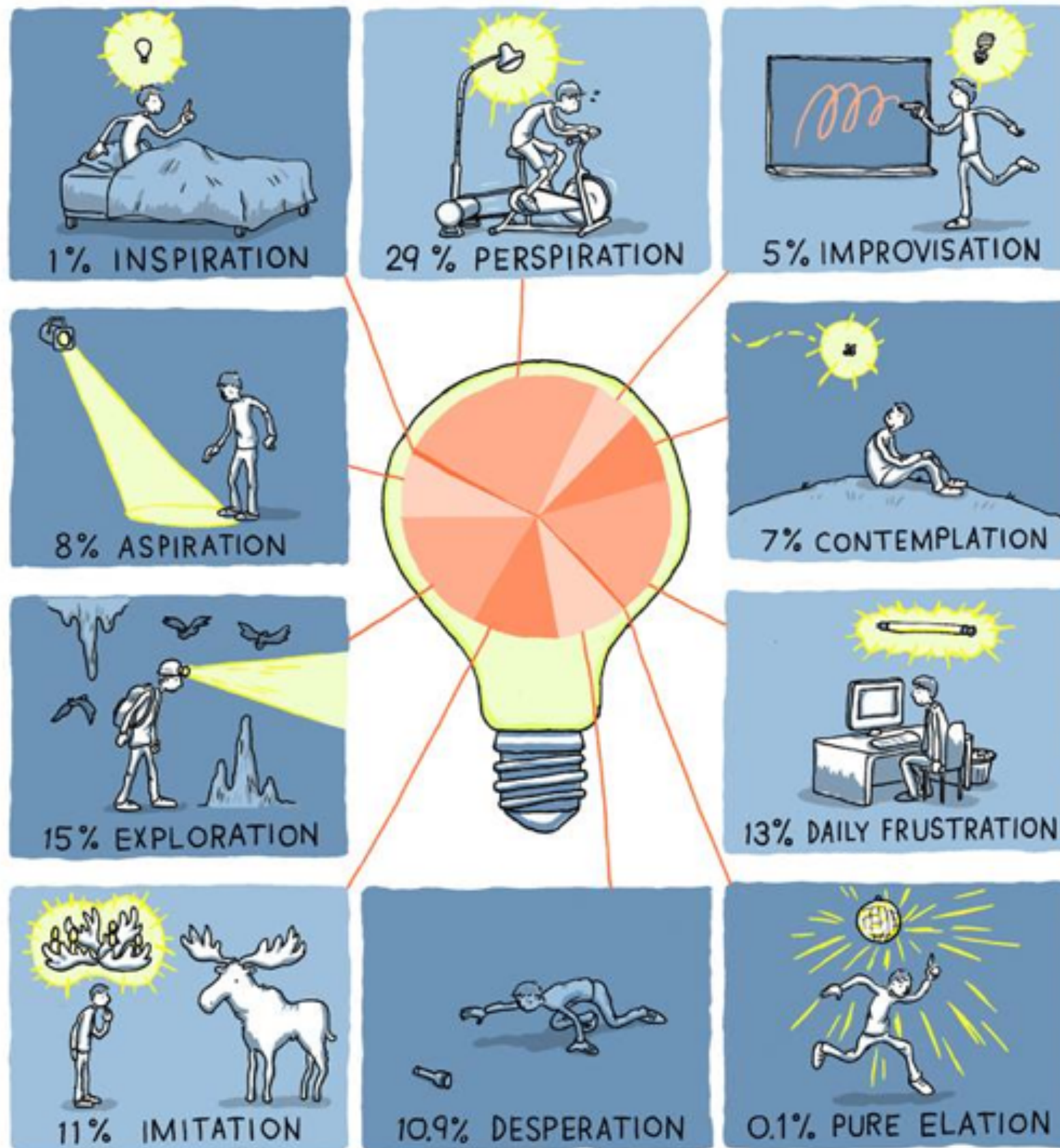
Enhance virtual reality



Advance personalized learning



Engineer the tools of scientific discovery



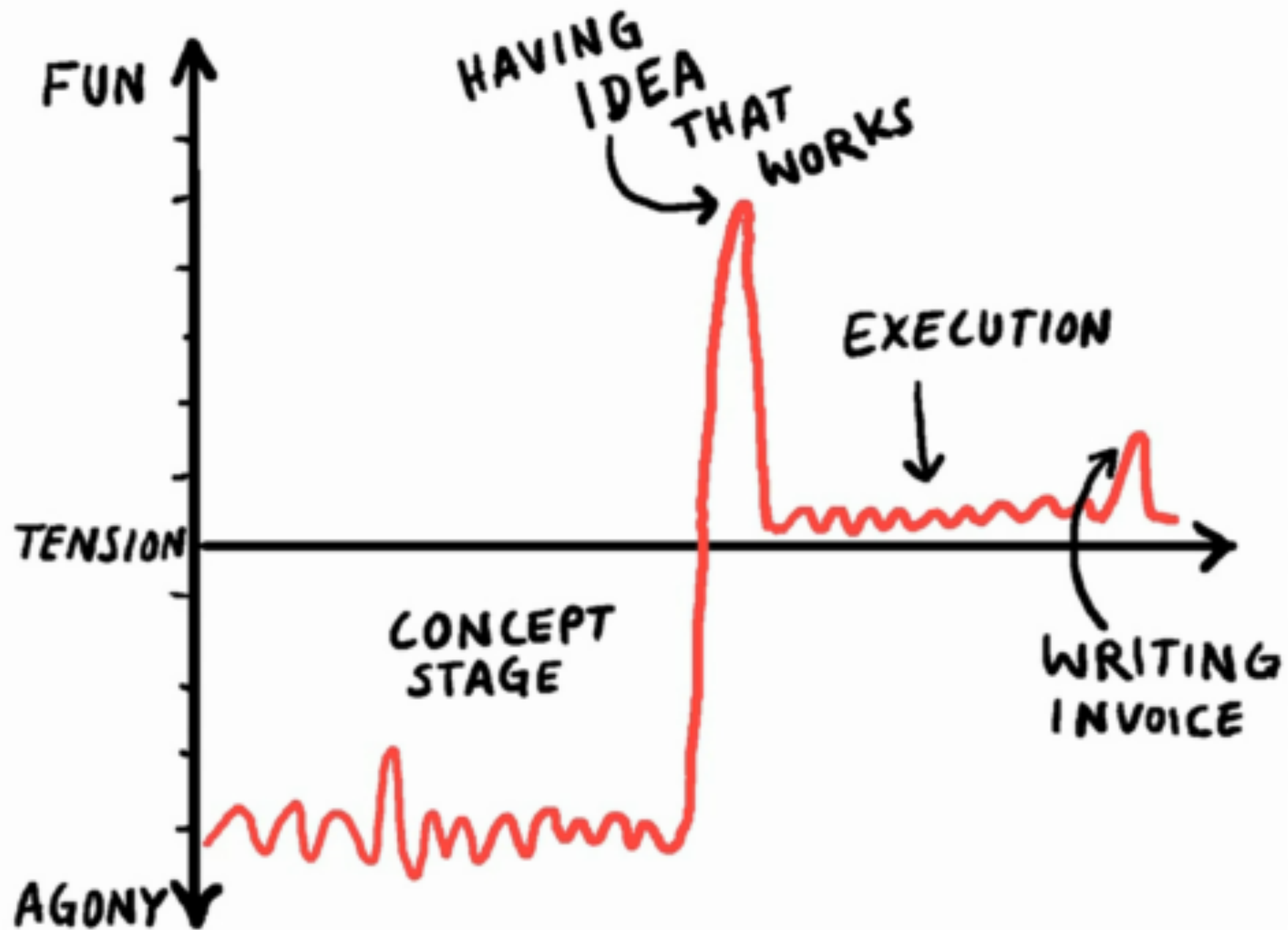
A COMIC FOR RED LEMON CLUB BY GRANT SNIDER





Αποστολή Αυτοκτονίας στη  
Ζούγκλα για την Αναζήτηση της  
Χρυσής Βελόνας









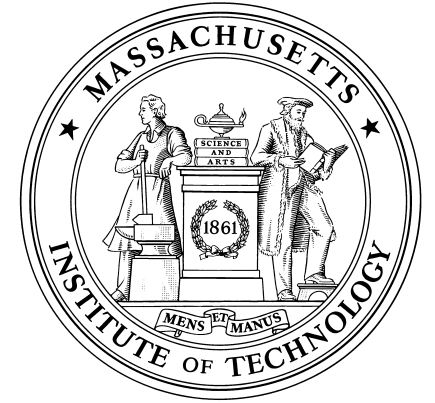


MCMXVI

MASSACHUSETTS INSTITUTE OF TECHNOLOGY



# Entrepreneurship @ MIT



- **Part of the academic culture**
- Report from Martin Trust Center for Entrepreneurship (2009)\*
  - **25.600 active companies from MIT Alumni**
  - **3,3 million jobs, \$2 trillion annual revenues**
  - **11<sup>th</sup> economy in the world**
- 100K Business Plan Competition
  - **> 60 companies valued at \$10.5 billion – AKAMAI, HubSpot**
- Multiple entrepreneurship supporting organizations

\* "Entrepreneurial Impact: The Role of MIT",  
Martin Trust Center for MIT Entrepreneurship, 2009

# MIT Enterprise Forum

- A global network of local organizations inspired by MIT and open to the world. Its **mission is to inform, connect, coach and accelerate technology entrepreneurs** in order to turn their ideas in to world changing companies faster and smarter.
- Founded in 1978 as part of MIT Alumni Association
- Part of MIT Technology Review
- The only nonprofit global organization with regional chapters, affiliated with an academic institution and focused on the success of early-stage technology entrepreneurs.

## **OPPORTUNITIES**

Natural-Born Entrepreneurs  
Strong Scientific Research Output  
Historically Resourceful  
Problem Solving/Analytical  
Skill-sets  
Engineering & Scientific Skills

## **NEEDS**

Mentoring & Coaching  
Global Visibility & Networking  
Commercialization of Research  
Tech Sector Business Experience  
Dedicated Domestic Resources



# **RESEARCH**

# **MARKET**



# MIT Enterprise Forum Greece

- Founded in 2013 as **an independent, non-profit organization that is self-funded** (no MIT funding); **40 members** with extended business and entrepreneurial experience, in Greece and abroad; by necessity lean structured with minimal overhead; **annually audited by EY Greece**.
- Targets the **entire Greek Tech Community**; researchers, innovators, entrepreneurs, and investors
- Offers **access to a tightly knit global network** of technology experts, innovators, entrepreneurs, and investors.
- Utilizes the **MIT brand, resources and hands-on experience** in technology commercialization and awareness.

# MIT Enterprise Forum Greece

- Stages “**StartSmart**” & “**Tech That Matter**” events: unique opportunities for entrepreneurial inspiration and networking.
- Organizes **MITEF Greece Startup Competition**: identifies promising Greek tech startups and accelerates them to the global market.
- Offers **hands-on workshops**: capacity building for the semifinalists & members of the tech community by local & international partners
- Provides **international visibility**: through the MIT Technology Review that reports inspiring stories from Greece to its affluent global readership.

# Thank you

Vassilis Papakonstantinou  
Chairman, MITEF Greece



[www.mitefgreece.org](http://www.mitefgreece.org)



[/mitefgreece](https://twitter.com/mitefgreece)



[/MITEnterpriseForumGreece](https://www.facebook.com/MITEnterpriseForumGreece)



[www.mitefcompetition.org/greece](http://www.mitefcompetition.org/greece)

MITEF  
GREECE  
STARTUP  
COMPETITION

MIT  
ENTERPRISE  
FORUM  
GREECE